

Future home of The Cincinnati Rowing Club. Land has been cleared by an earth moving machine that pushed over the trees, uprooting all trees. SEE TREES ON COVINGTON SHORE AND ROOTS ON NEWPORT BANK



The U S Corps of Engineers told the Cincinnati Rowing Club that it must excavate 400 cubic yards from the Newport bank so that the barge will not stick out too far into the Licking, disturbing river barge traffic. SPT DATE OF PHOTO

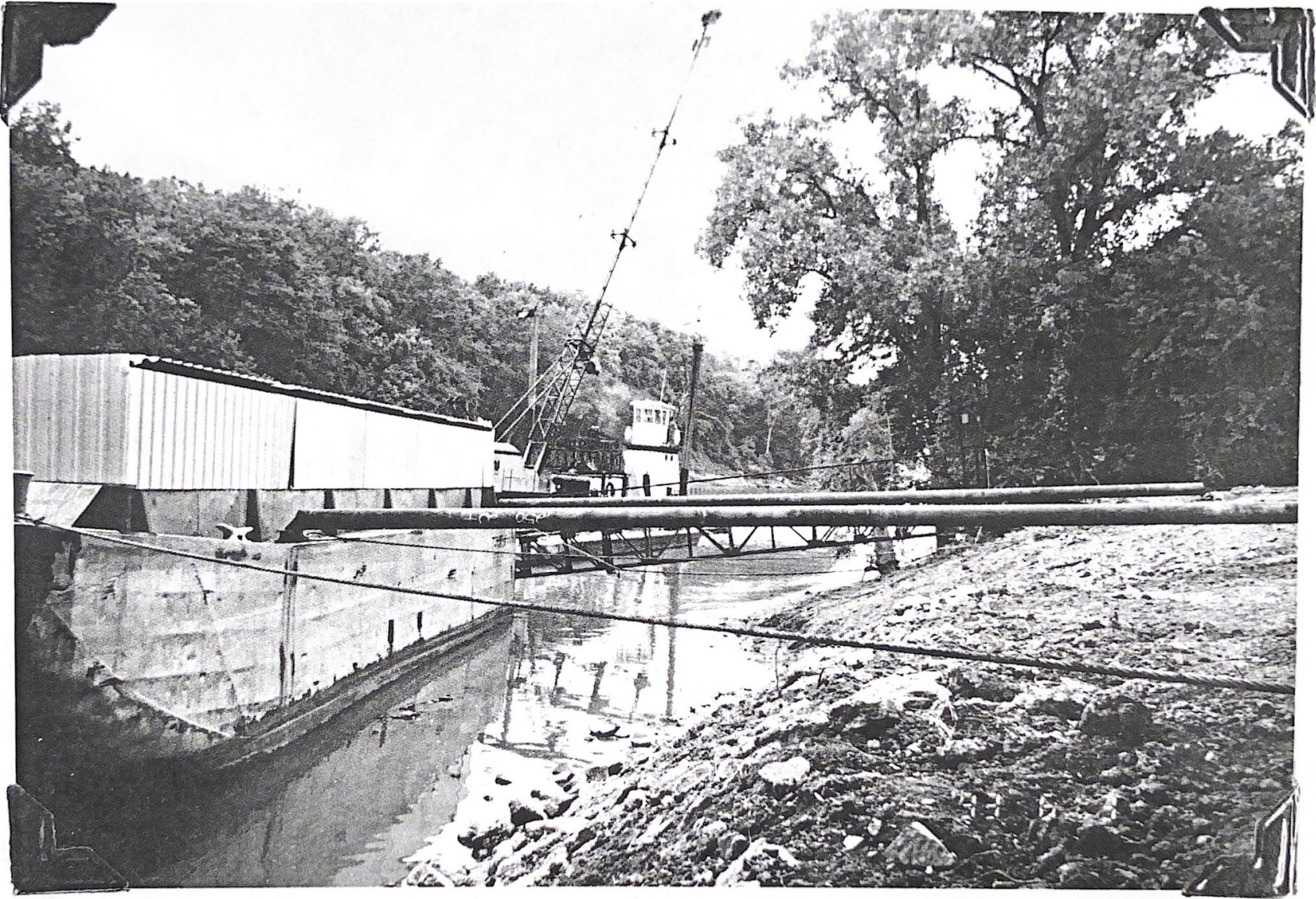


Earth movers clear the land, near the Newport - Covington
Fifth Street Bridge, for the future home, of the Cincinnati Rowing
Club.

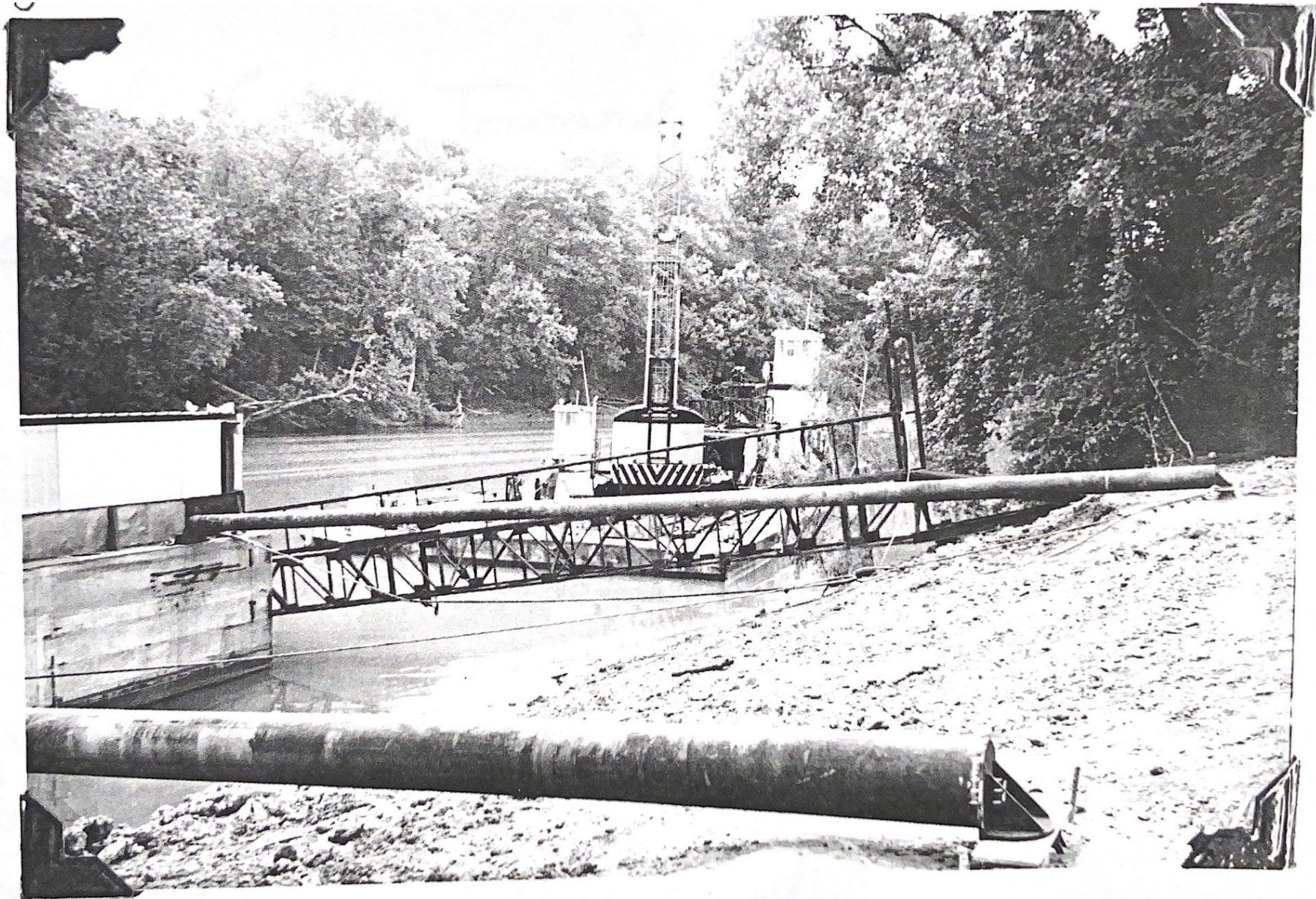
Newport bank of the fucking river. Here
you see both large pieces of land



Bulldozer brings cement, to two workers, who will shovel
the cement into forms, already laid into the river bank. The
deep cement filled holes will keep the barge from shifting.



The barge is moved into position on the Newport bank of the Leaking River. Here you see both large pieces of pipe



all seems well



The barge has been delivered to Newport
Kentucky. The work boat backs away!

And heads down the Licking toward
The Ohio River. Note Cincinnati Ohio on
the far bank. See Riverfront Stadium





Theresa Colgan, Executive Director of the Cincinnati Rowing Club, watches over the groundwork being done, in Newport, before the delivery of the barge

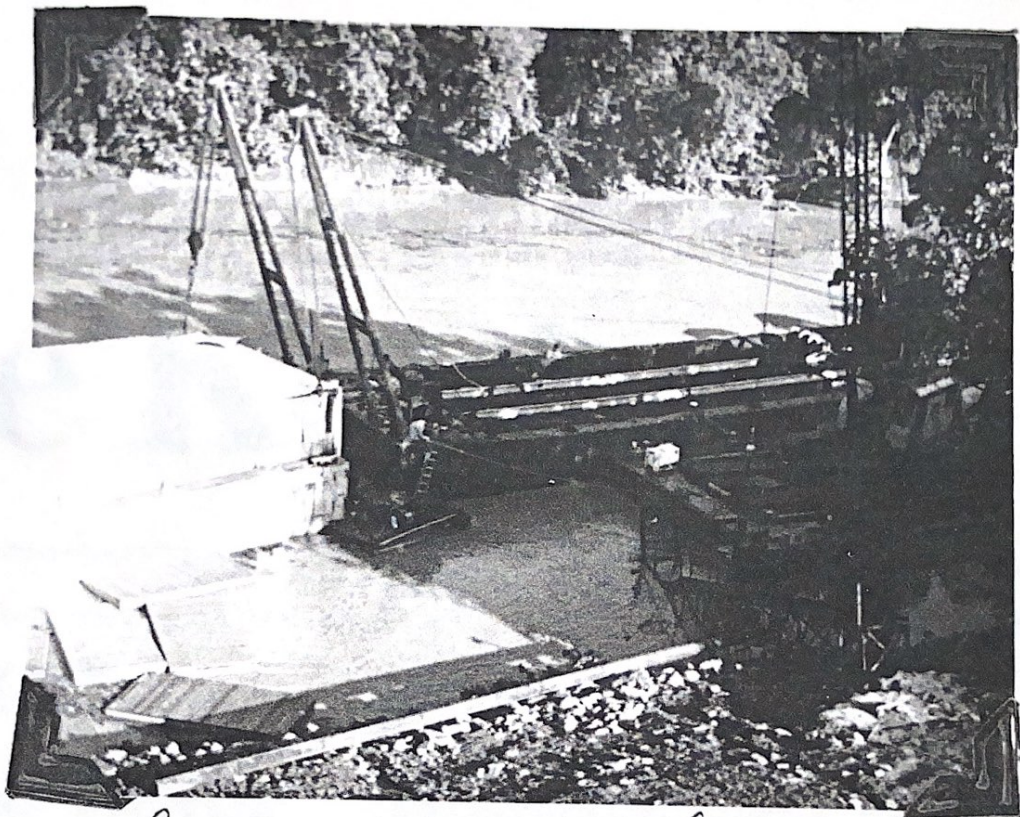




Inside these two trap doors is a steel bar. Two long pipes will be welded to these bars on one end, and the other end will be welded onto the berg so that when the rivers rise and fall, the barges will not break free



Pipes are welded into place



after a very bad storm, the barge, belonging to
The Cincinnati Rowing Center sank. The contraption
seen here is a hoist. Pumps are at work pumping
water from the sunken barge and the orange
pieces lift the barge from the river into a
floating position

The Kentucky Post

ti Post

© WEDNESDAY JUNE 16, 1993

Sunken barge halts rowing camp

Storms damage new Licking facility

By Peggy Kreimer
Kentucky Post staff reporter

The Cincinnati Rowing Center will find out later this week just how far up the creek it is and how many paddles it has left after a storm Monday sank the group's barge and docking area on the Licking River.

The 90-foot-by-35-foot barge with a 10-foot-by-56-foot floating walkway was being pumped out Tuesday.

"That will disclose if the sinking did any damage," said center director Neal Gardner. "If it did, we will put it in dry dock to repair."

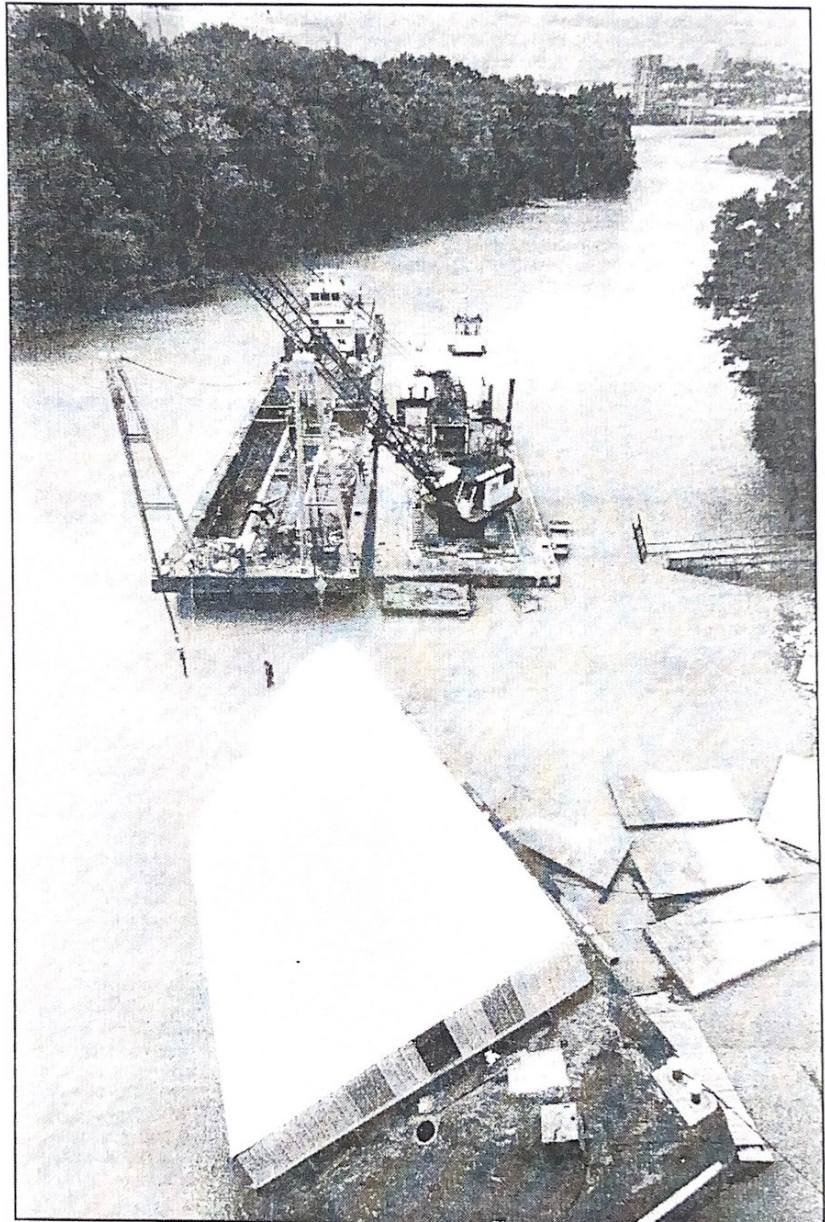
The barge, which was used to store equipment and as a dock and launch area for rowers, is insured. "But we don't have unlimited financial resources," Gardner said. Heavy damage could affect the group's ability to continue its full program.

The center, a non-profit organization, is one of five national facilities training rowing teams for the Olympics and other competition. It is funded through membership and sponsorship fees.

College and high school rowing teams use its weight-lifting and fitness facility and indoor rowing tank on Eastern Avenue in Cincinnati. But the center also has an open membership.

The outdoor training facility had been stationed in Newport beneath the Central Bridge on the Ohio River. When the bridge was torn down, the center practiced at East Fork State Park or Coney Island in Ohio. It moved to the Licking River because of the river's relative calm compared with the Ohio River.

The center's first development camp in the Licking location was to open Tuesday. Between 15 and 20 participants, including trainees from across the country, were expected. The camp was canceled and participants were sent to facilities in Philadelphia and Wisconsin.



JOE MUNSON/The Kentucky Post

Workers from Aquarius Marine, Ludlow, and Carlisle Marine, Taylorsport, work to raise the sunken Cincinnati Rowing Center barge and

docking area. The barge, moored near the Fourth Street Bridge in Newport, sank after heavy rains.